



## HOW TO UPDATE FIRMWARE - IOS DEVICE

This guides shows how to install the Sunrise OTA App and update firmware on your Curve LTG Treadmill.

Written By: Rogue Product Development



## Step 1 — How to Update Firmware - iOS Device



- Download the “SUNRISE OTA” from the APP Store and install to the cell phone or portable device with Bluetooth. Make sure the cell phone or portable device can receive email as the update program will be sent to the email as a \*.bin format email attachment.

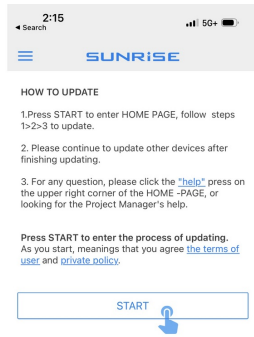
## Step 2



- Start walking on treadmill. Running belt **MUST** be moving at 2mph or higher during the entirety of the OTA update (4 Minutes) Keep walking.
- Press and hold (approximately 5 seconds) “-”, “+” and “PAUSE/STOP” key at the same time to enter the OTA update mode as shown in Image 2, Lettering “OTA” and Bluetooth icon shows on the screen as shown in Image 2, OR screen will be flashing.

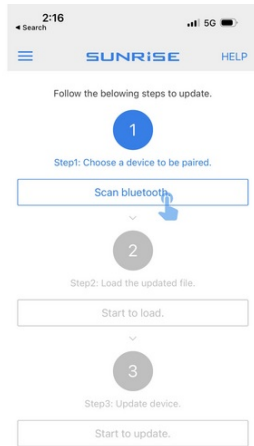


## Step 3

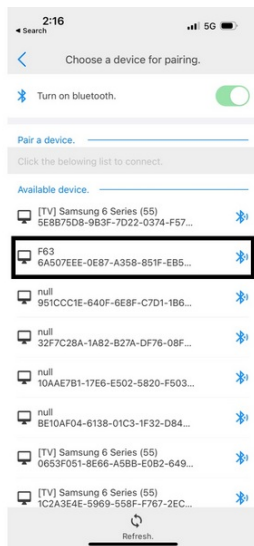


- Open the App on your mobile device and click the " START " button to enter the OTA process.

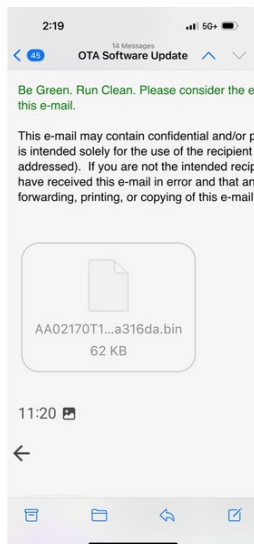
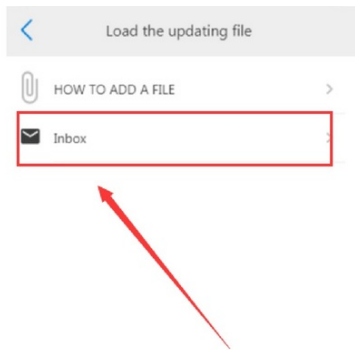
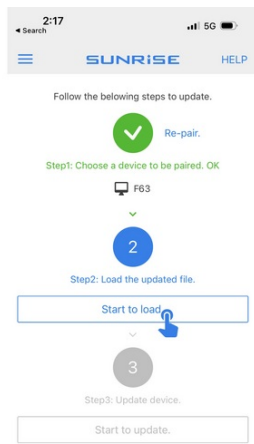
## Step 4



- Click "Scan Bluetooth". Make sure the Bluetooth is turned on on your mobile device.
- You will see surrounding Bluetooth devices. (If you can't see, click the "Refresh" key below to re-scan), find the Console's Bluetooth name as "F63" in the device list
- Once pairing is successful, proceed to Step 5.



## Step 5

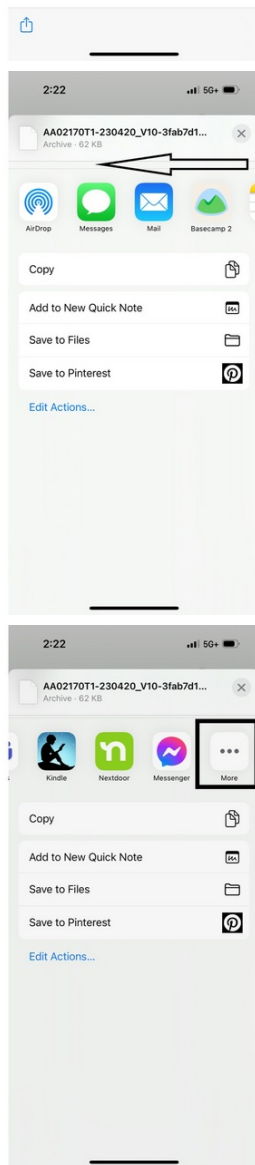


- Click the "Start to Load" button.
- If your Inbox appears empty, you will need to import the updated file into the inbox now.
- Open the email app on your mobile device, locate the email with the \*.bin attachment. Click the attachment.  
(Different email app might have slightly different screen.)

## Step 6

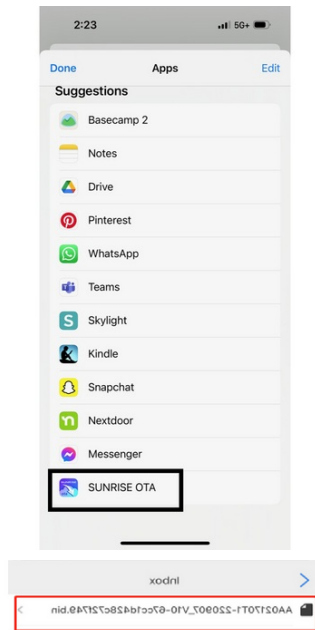


AA02170T1-230420\_V10-3fab7d13a316da.bin  
MacBinary archive  
62 KB



- Click the share icon in the lower left corner to access the share list and then share to Sunrise app.
- Make sure swipe the share list to see **SUNRISE APP** to share.

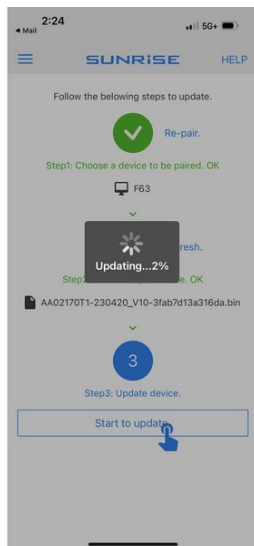
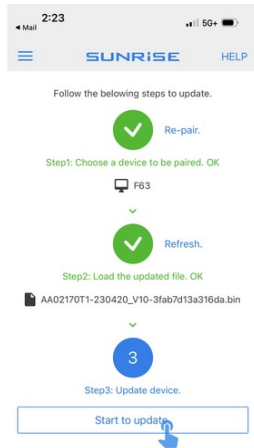
## Step 7



- Click "Sunrise OTA" in your app sharing options.
- The screen will automatically switch to the Sunrise app inbox screen when the sharing is successful. You will see \*.bin file appear in the SUNRISE APP inbox. Click on the updated file to load in.



## Step 8



- Click the "Start to Update" button, the app will begin displaying progress. Wait for roughly 3 minutes and make sure the Console is in power.
- When the app shows "100%" updated, the screen jumps back to the original screen from Step 3, meanwhile the console beeps and automatically restarts.
- Firmware update is complete